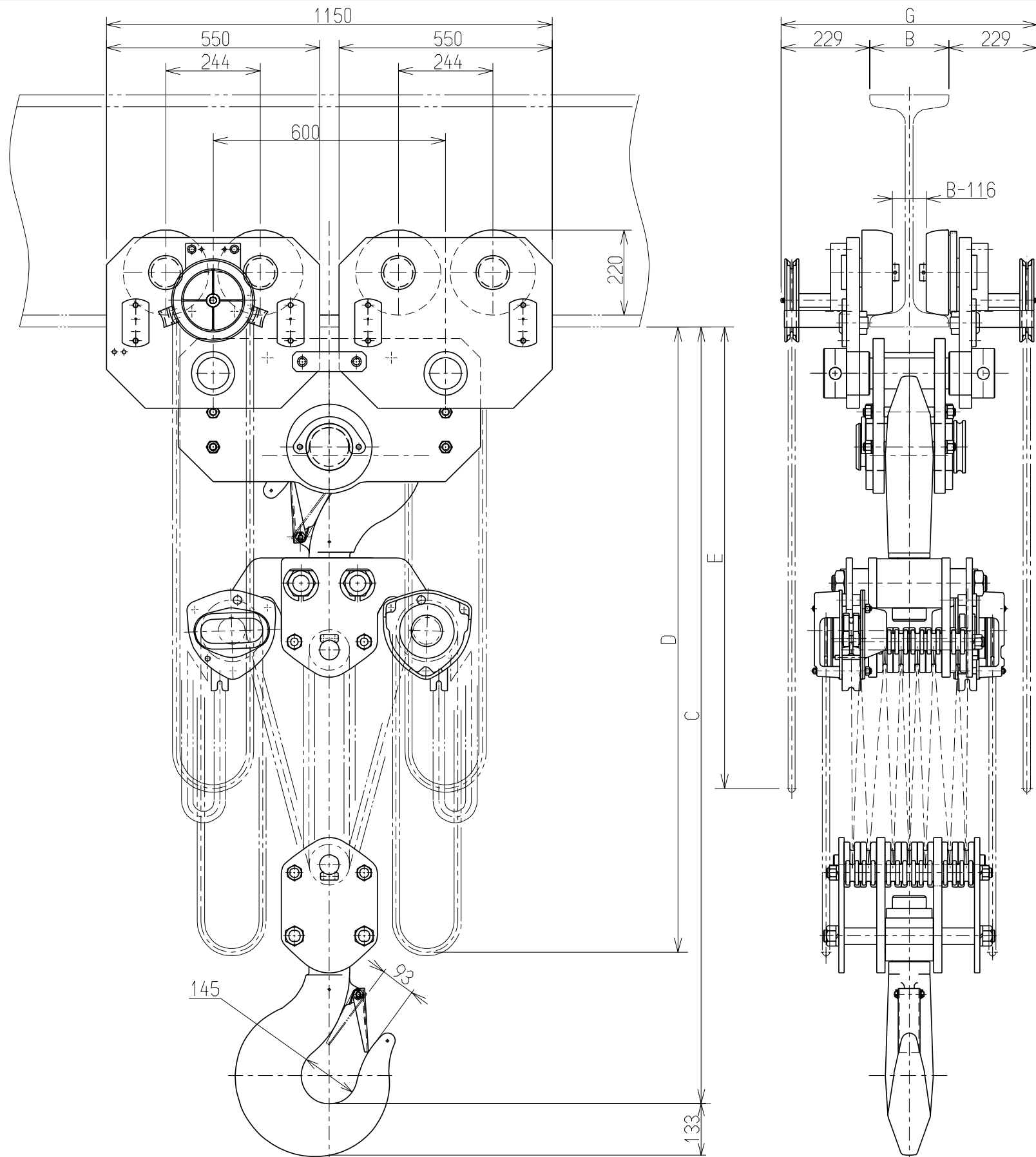


1 2 3 4 5 6 7 8 9



| Particulars                     |                 |                               |       |
|---------------------------------|-----------------|-------------------------------|-------|
| Capacity                        |                 | 35                            | t     |
| Lift                            |                 | 3.5                           | m     |
| Min. Headroom                   | : C             | 1750                          | mm    |
| Chain Pull to Lift Full Load    |                 | 369                           | N×2   |
| Hand Chain                      | for Lift-ing    | Length from Bottom of Rail :D | 5.0 m |
|                                 | for Traver-sing | Length from Bottom of Rail :E | 4.1 m |
| Flange Width                    | : B             | 204-305                       | mm    |
| Min. Radius for Curve           |                 | -                             | mm    |
| Max. Dimension of Trolley Width | : G             | -                             | mm    |
| Mass                            |                 | Approx 1350                   | kg    |
| Painting Color                  |                 | Munsell 6YR6/14               |       |

Note!  
This diagram may be changed a little when it's produced.

|      |     |          |           |            |           |   |          |   |       |     |      |   |
|------|-----|----------|-----------|------------|-----------|---|----------|---|-------|-----|------|---|
|      |     |          | APPROVED  | CHECKED    | DRAWN     | TITLE 35t CBSG SERIES CHAIN HOIST WITH GEARED TROLLEY |          |   |       |     |      |   |
|      |     |          | H.Saito   | N.ishikawa | A.Saito   |   |          |   |       |     |      |   |
|      |     |          | Nov.10.11 | Nov.10.11  | Nov.10.11 |   |          |   |       |     |      |   |
| REV. | QTY | CONTENTS |           |            | DATE      | DRAWN   | APPROVED |  | SCALE | NOT | REV. | 0 |

DWG. NO. 3X60878

UNIT : mm